



SPECIFICATIONS

General

- The proposed work is not anonymous: the candidate must sign his/her composition with his/her first and last name or artist's name, if applicable.
- Transcriptions of works from the repertoire are not accepted. The proposed work must be original and may not contain borrowings from pre-existing works, with the exception of the right of short quotation as provided for in article L122-5-3-a of the French Intellectual Property Code.

1 - Category Solo organ

Composers are asked to write a piece specifically for this instrument, with a duration from 5 to 8 minutes, with ostinato as the imposed theme.

The great organ of the church of Notre-Dame de Royan, built from 1962 to 1964 and completed from 1964 to 1984, is without doubt the masterpiece of the organ builder Robert Boisseau.

Classified as a historical monument in January 2006, it was the first instrument built in the 20th century based on the fundamental criteria of classical organ building. It was one of the triggers of an aesthetic turning point, witnessing the revival of organ building in France.

In 1964 the instrument took part in the first edition of what was to become the International Festival of Contemporary Art, which contributed in large part to its reputation.

After a major restoration, from 2014 to 2018, it has regained its place as a flagship instrument of local cultural life.

The two manuals of the Positif and Grand Orgue are of "French Baroque" aesthetics, the organ builder Robert Boisseau having been inspired by the great Clicquot organ of Poitiers cathedral.

The 3rd manual, the Récit expressif, has a rather romantic aesthetic.

The "constraints" of the instrument and its environment

The keyboards are mechanically driven, and it may be difficult for the performer to play the three coupled keyboards for long periods.

The acoustics of the church are very generous (7 second reverberation).

Composition of the great Boisseau organ of Notre-Dame de Royan (48 jeux)

The 48 jeux are distributed over three 56-note keyboards and a 30-note pedalboard.

Grand-Orgue

Montre 16, montre 8, bourdon 8, prestant 4, doublette 2, fourniture 5 rangs, cymbale 4 rangs, tierce 2 1/5, nazard 2 2/3, tierce 1 3/5, cornet, trompette 8, clairon 4, trompette 8 en chamade, clairon 4 en chamade (les chamades sont coupées en basses et dessus)

Positif de dos

Montre 8, bourdon 8, prestant 4, doublette 2, quarte 2, Nazard 2 2/3, tierce 1 3/5, fourniture 4 rangs, cymbale 3 rangs, trompette 8, cromorne 8, voix humaine. Tremblant.

Récit expressif

Principal 8, principal 4, voix céleste, flûte 8, flûte 4, flûte 2, sifflet 1, plein jeu 4 rangs, cornet 5 rangs (hors boîte expressive), bombarde 16, trompette 8, clairon 4, hautbois. Trémolo.

Pédale

Flûte 16, flûte 8, flûte 4, soubasse 16, chalumeau 4 (en chamade), bombarde 16, trompette 8, clairon 4.

Accouplements : Récit/G.O, Pos/G.O

Tirasse récit, tirasse G.O, tirasse positif.

Boîte expressive

Combinator

Mechanical traction

2 - Category Organ, choir and instrumental ensemble

Composers are asked to write a piece specifically for this instrumental device, with a duration from 7 to 10 minutes.

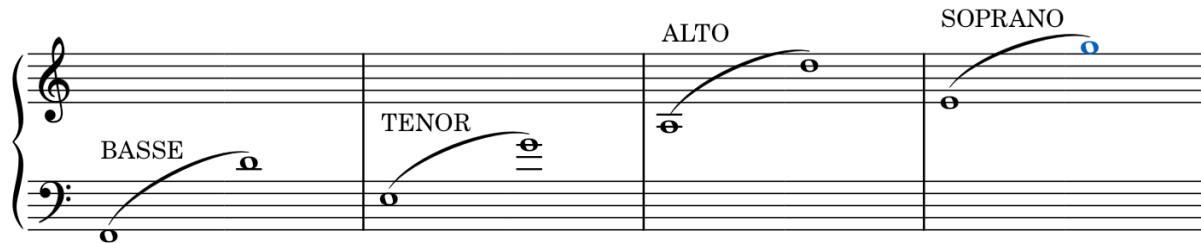
Particular attention should be paid to the consideration of constraints of realization and acoustics related to the arrangement of the ensemble and the organ (ensemble located under the organ, at the bottom of the main staircase).

Imposed instrumental nomenclature:

- Instrumental ensemble :
 - 4 violins (2 violins 1, 2 violins 2)
 - 2 violas (no divisi)
 - 2 cellos (no divisi)
 - 1 double bass

- Choir (amateur, non-reader)
 - Compulsory text : Salve Regina (text of the Gregorian antiphon)
 - SATB
 - No divisi

- Range of voices :



- Organ

The great organ of the church of Notre-Dame de Royan, built from 1962 to 1964 and completed from 1964 to 1984, is without doubt the masterpiece of the organ builder Robert Boisseau.

Classified as a historical monument in January 2006, it was the first instrument built in the 20th century based on the fundamental criteria of classical organ building. It was one of the triggers of an aesthetic turning point, witnessing the revival of organ building in France.

In 1964 the instrument took part in the first edition of what was to become the International Festival of Contemporary Art, which contributed in large part to its reputation.

After a major restoration, from 2014 to 2018, it has regained its place as a flagship instrument of local cultural life.

The two manuals of the Positif and Grand Orgue are of "French Baroque" aesthetics, the organ builder Robert Boisseau having been inspired by the great Clicquot organ of Poitiers cathedral.

The 3rd manual, the Récit expressif, has a rather romantic aesthetic.

The "constraints" of the instrument and its environment

The keyboards are mechanically driven, and it may be difficult for the performer to play the three coupled keyboards for long periods.

The acoustics of the church are very generous (7 second reverberation).

Composition of the great Boisseau organ of Notre-Dame de Royan (48 jeux)

The 48 jeux are distributed over three 56-note keyboards and a 30-note pedalboard.

Grand-Orgue

Montre 16, montre 8, bourdon 8, prestant 4, doublette 2, fourniture 5 rangs, cymbale 4 rangs, tierce 2 1/5, nazard 2 2/3, tierce 1 3/5, cornet, trompette 8, clairon 4, trompette 8 en chamade, clairon 4 en chamade (les chamades sont coupées en basses et dessus)

Positif de dos

Montre 8, bourdon 8, prestant 4, doublette 2, quarte 2, Nazard 2 2/3, tierce 1 3/5, fourniture 4 rangs, cymbale 3 rangs, trompette 8, cromorne 8, voix humaine. Tremblant.

Récit expressif

Principal 8, principal 4, voix céleste, flûte 8, flûte 4, flûte 2, sifflet 1, plein jeu 4 rangs, cornet 5 rangs (hors boîte expressive), bombarde 16, trompette 8, clairon 4, hautbois. Trémolo.

Pédale

Flûte 16, flûte 8, flûte 4, soubasse 16, chalumeau 4 (en chamade), bombarde 16, trompette 8, clairon 4.

Accouplements : Récit/G.O, Pos/G.O

Tirasse récit, tirasse G.O, tirasse positif.

Boîte expressive

Combinator

Mechanical traction

3 - Pedagogical piece for organ category

Composers are asked to write a piece specifically intended to be played by a young pupil (aged between 8 and 12 approximately) who has begun his or her apprenticeship directly on the organ (with an over-pedalboard for the youngest), and who has been playing the instrument for 2 to 4 years.

The parameters to be taken into account include: the difficulty of reaching the extremities of the pedalboard (the most comfortable range being around the central notes); solfeggio reading of the score, which can still be difficult. The piece must deal with the imposed theme: the ostinato.

Duration: around 5 minutes, which can be broken down into several shorter pieces, or even a cycle of short pieces.

4 - Contact

If you have any questions about these specifications, please send an email to:

contact@royan-orgues.fr